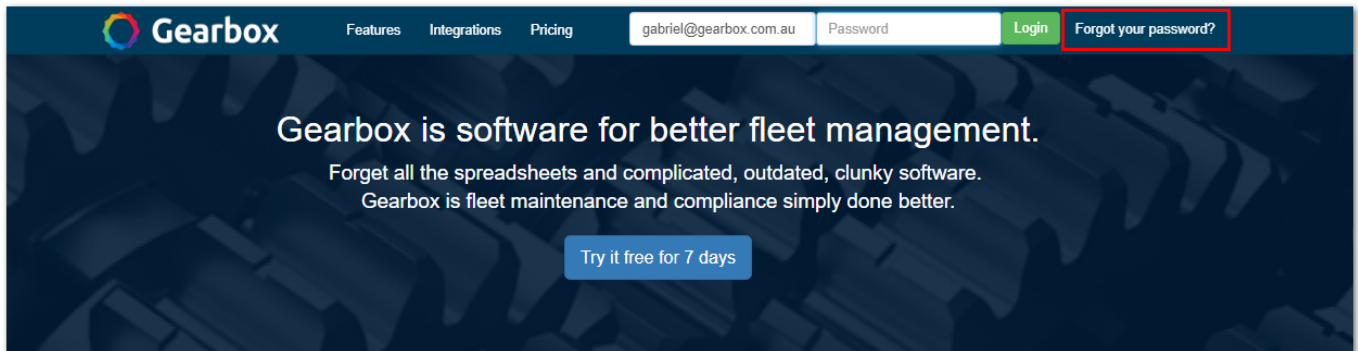


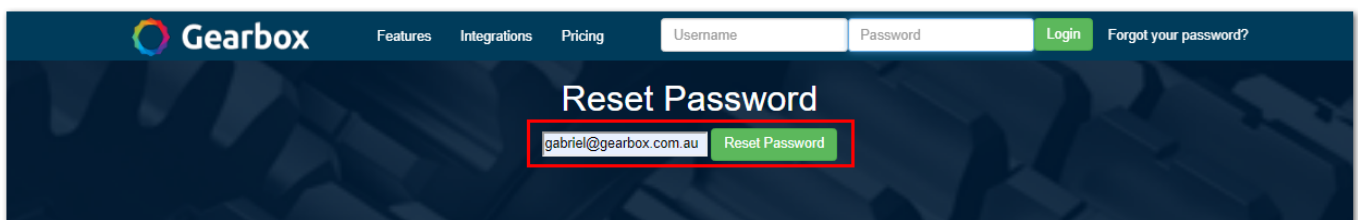
Forgot password

In the instance that you are trying to login to your Gearbox system and forgot your password see instructional steps below.

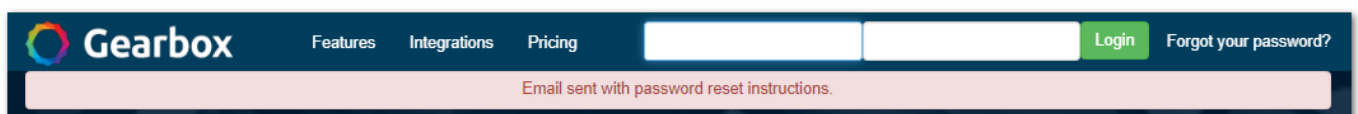
On the Gearbox login section of the website, click **Forgot your Password?**



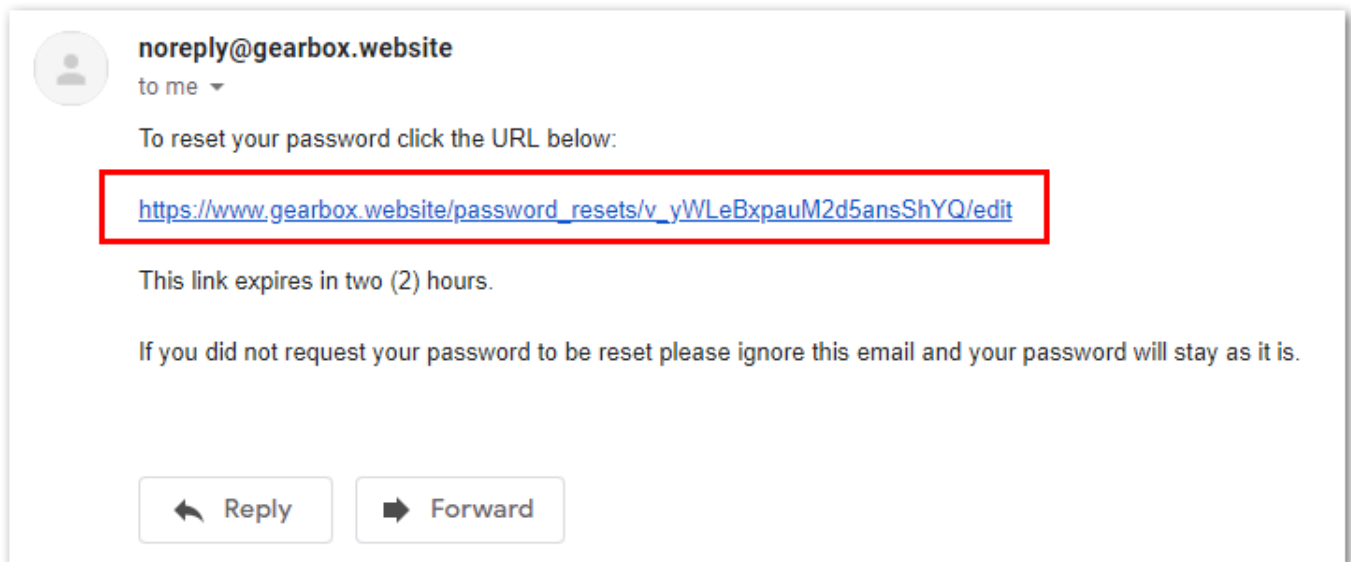
Enter your email address and click **Reset Password**



If the reset password request has been successful the following message will appear in the red bar

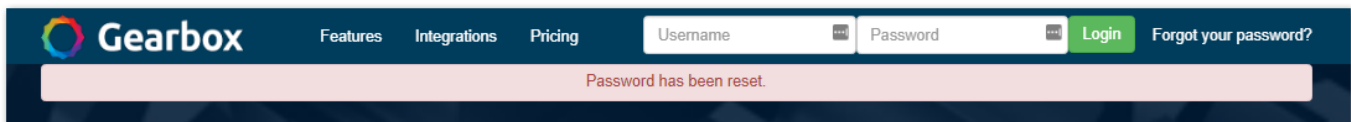


At this point check your email inbox for an email from *noreply@gearbox.website*. If the email does not appear in your Inbox check your Junk/Spam folder. Once you locate the email click on the URL link provided.



The link provided in the email will open a new tab in your internet browser. Upon the Reset Password page enter your new password in the **Password (1)** field and click **Update Password (2)** to save your new password.

If the password change was successful the following message will appear.



If you have followed the above and still experiencing issues resetting your password please email support@gearbox.com.au